

How to control the charging costs of your employees?

Saskia Lannau – An Van Waes

18/06/2026



A partner for your electric mobility



Supply and installation of charging solutions

- Installation at employees' homes or offices
- Choice of reliable charging stations
- Follow-up from request to activation



Management & control of your charging infrastructure

- Real-time insight into consumption and sessions
- Automatic refund of home charging
- Monitoring, support and maintenance



Charging the public without worries

- Access to European network
- Transparent rates and invoicing
- Insight into charging behaviour and costs

The blind spot: what do we not know today?

Electric mobility brings new advantages, but also new complexity — not due to volume, but due to lack of insight.



Where do my employees charge today?

Home · Office · Public · Abroad



Who stays connected (too) long?

Idle fees · Charging station hoggers



Who often charges publicly when it could be done differently?

Cost vs. alternative available

No control over costs without insight into behaviour



What fleet managers experience today

Scattered data



- Data is fragmented in invoices
- Data is in different systems

Lack of overview



- Multiple charging situations
- No overall picture

No insight into behaviour



- Outliers disappear
- Averages hide reality

Difficult conversations



- Discussions remain subjective
- No objective data

If you can't see it, you can't manage it

Typical cost leaks

- Stay connected for a long time (blocking rate / minute cost / parking)
- Very high starting fee
- Wrongly closed charging sessions
- Incorrect data reconciliation between MSP/CPO

- Public charging while home/office is possible
- DC charging where AC would suffice

Small deviations x many vehicles = structural additional cost

Answers in a few clicks



Fleet Reporting

- Visualization of the total charged energy and charging costs
 - Home / at the office / public
 - AC/DC
 - Per country (BE/FR/NL/DE/...)
 - Per period
- See immediately where costs are derailing
- Compare the charging behaviour of different drivers
- Get Daily Anomaly Report
- Export all data with one click

Decide faster, analyse less



Fleet Reporting in practice

An Van Waes
Mobility & Benefits Manager at Luminus

Was looking for:

- less manual work
- faster insight
- an objective basis for starting the conversation

The Luminus Fleet



**580 electric
vehicles**



**360 charging stations
at home**

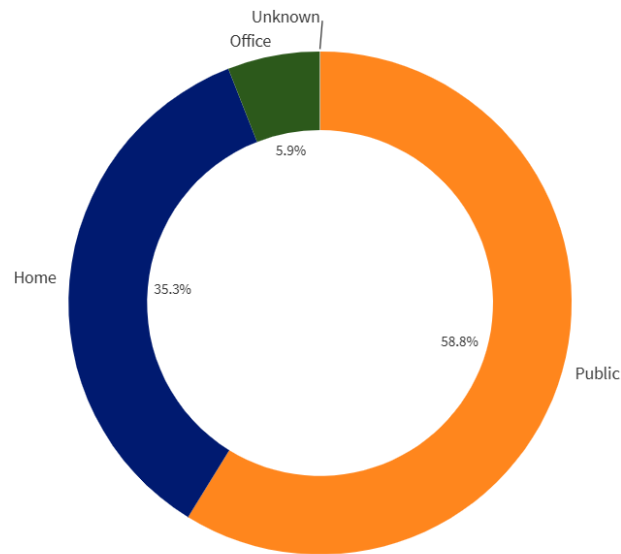


**100 charging stations
in the office**

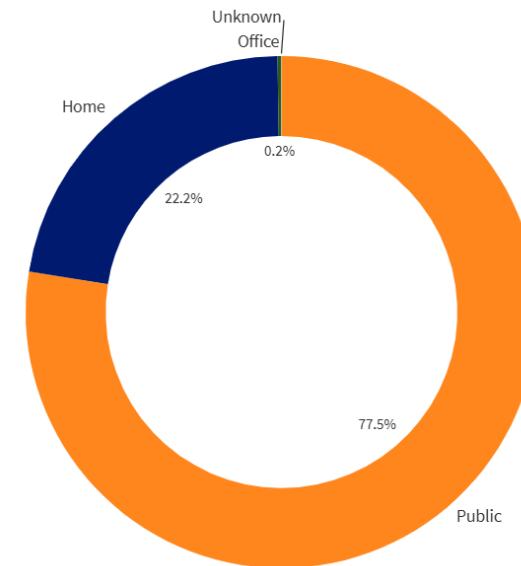
Access to fleet reporting since April 2026

First insight

kWh by Charger Type



Cost by Charger Type



"What surprised me most was how many employees mainly charge publicly, even when they can charge at home."

3 questions answered on 1 dashboard

Question 1

Where do my
employees mainly
charge?

Question 2

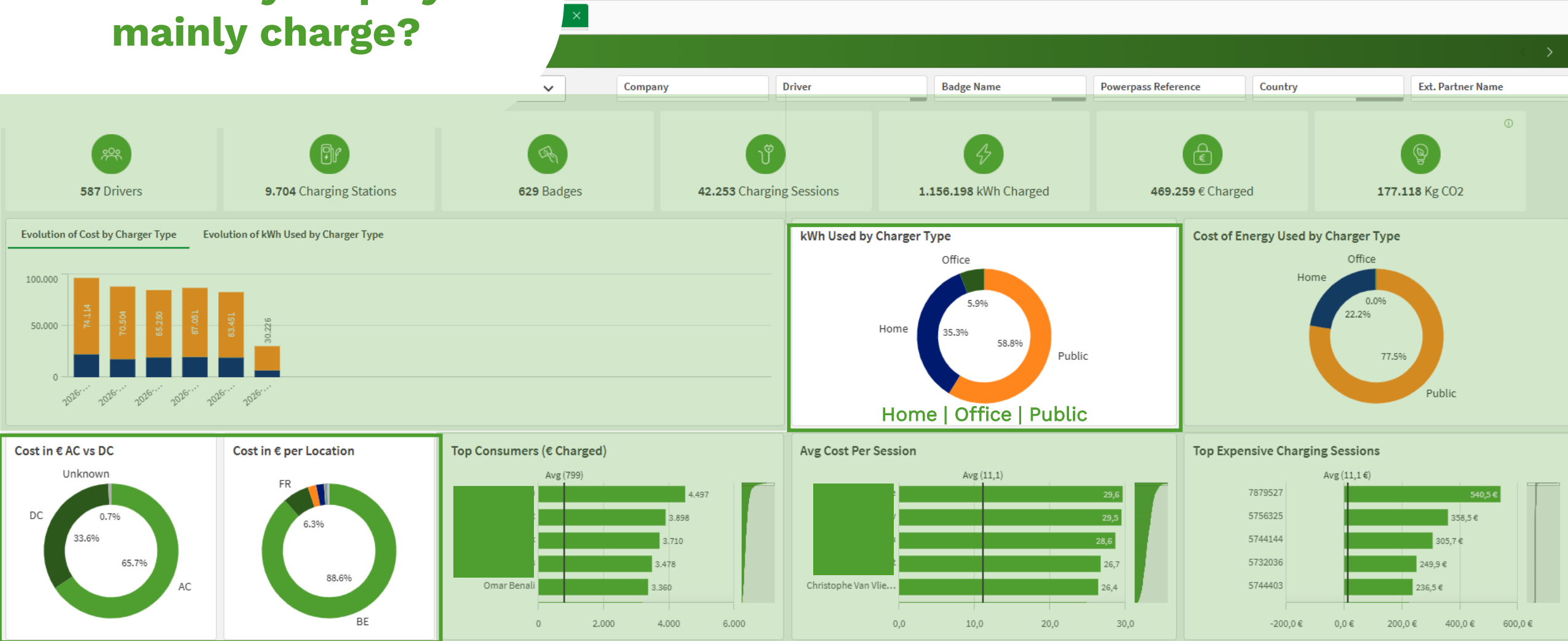
Which employees have
the highest charging
costs?

Question 3

What are the outliers?

Question 1:

Where do my employees mainly charge?

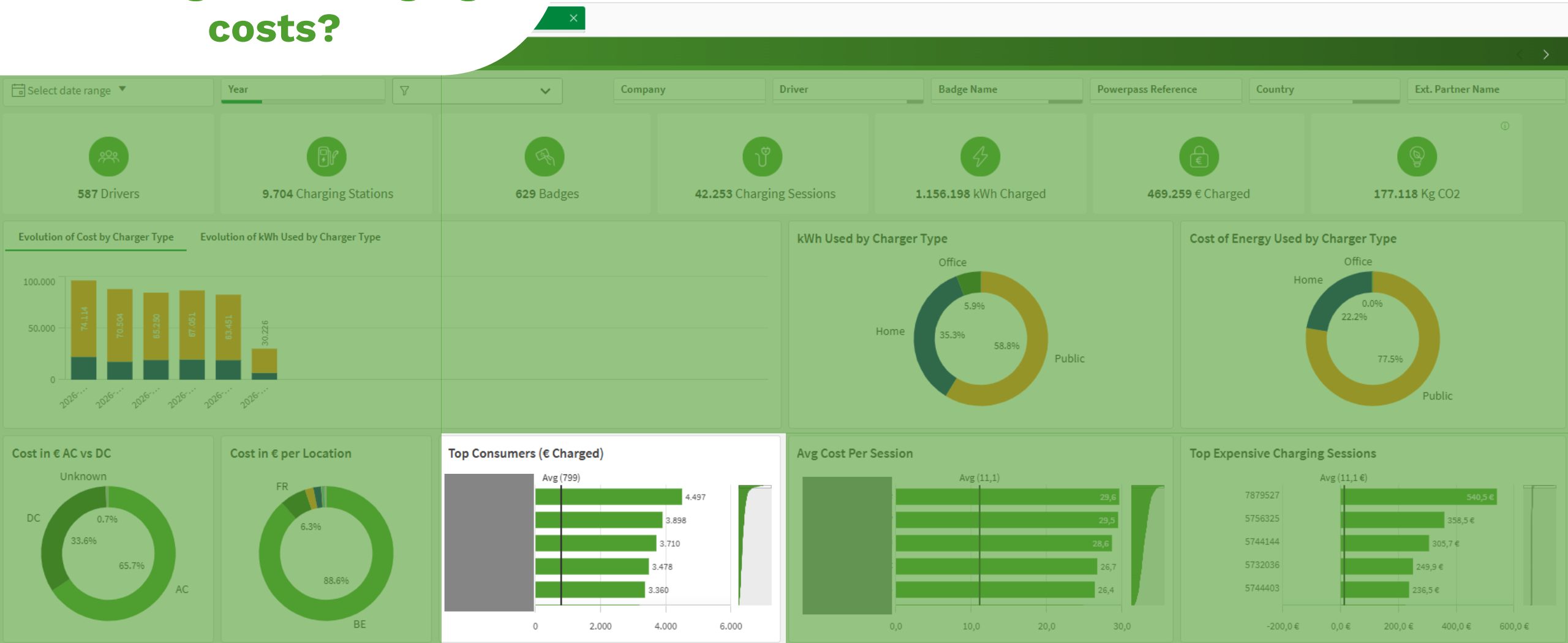


Slow charging |
Fast charging

BE | NL | FR | DE |
LU & many more

Question 2:

Which employees have the highest charging costs?



Top consumers

Consumers with highest average session costs

Question 3: What are the outliers?



Top consumers

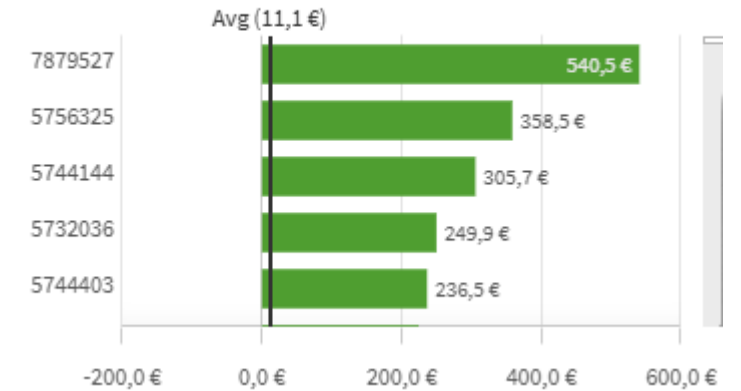
Consumers with highest average session costs

Fleet reporting allows you to drill down and take action

Example high charging session:

- Charging session lasted unusually long
- Stood out in the overview
- Immediate follow-up → correction

Top Expensive Charging Sessions



Details of 42.188 Charging Sessions

Location	Country	Power Type	Voltage	Total Time (hh:mm)	Total Parked Time (hh:mm)	Total kWh	Currency	Start Cost	Energy Cost	Minute Cost	Idle Cost	Conversion Fee	Total Cost € excl. VAT	Invoice Number
						1.154.405,22		3.696,3	451.735,3	10.260,5	2.141,0		467.826,96	
	BE	DC	-	25:52	-	55,35	EUR	0,0	37,2	503,3	0,0	0%	540,54	
	BE	AC	-	18:37	00:00	77,11	EUR	0,5	78,7	279,4	0,0	0%	358,54	
	BE	AC	-	16:31	00:00	56,20	EUR	0,5	57,3	247,9	0,0	0%	305,73	
	BE	AC	-	12:34	00:00	59,72	EUR	0,5	60,9	188,5	0,0	0%	249,91	
	BE	AC	-	11:33	00:00	61,48	EUR	0,5	62,7	173,3	0,0	0%	236,50	
	FR	AC	-	22:23	-	53,04	EUR	0,3	22,3	201,5	0,0	0%	224,04	

From insight to policy

Fleet reporting enables targeted actions:

- Targeted communication to employees
- Adjustment of car policy (e.g. DC only if necessary)
- Promote home charging more actively
- Setting priorities: what to tackle first?



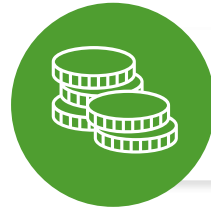
"No fines, but clear rules of the game"

Even more control, without blockages



Country-based split billing

Keep control over where your employees can charge, aligned with your company policy



Budget control

Keep charging costs under control with clear limits on price, networks and spend



Mileage registration

Keep accurate insight into driven kilometres to ensure correct reimbursement

Charging remains possible, but any additional cost is charged to the employee

Your take-away

Measuring = knowing. Knowing = steering.

- Electric fleets are manageable
- Cost control requires focus, not extra work
- You need the right tools to take the right decisions
- Good data supports the right conversation (with employees and management)



Together we make the difference.